

exbio

KOMBITEST T Cell 4-color (RUO) 50 tests | Cat. No. ED7781

RUO










Not for use in diagnostic or therapeutic procedures.

Technical Data Sheet (EN)

Version: ED7781_TDS_v1_EN

Date of Issue: 16-02-2023

Symbols used in the product labeling

	Research Use Only
	Manufacturer
	Consult instructions for use
	Contains sufficient for <n> tests
	Catalogue number
	Batch code
	Use by date
	Temperature limit
	Keep away from sunlight

1. Intended Purpose

KOMBITEST T Cell 4-color is intended for detection and enumeration of lymphocyte populations and subsets in human whole blood by flow cytometry.

What is detected and/or measured

The product KOMBITEST T Cell 4-color detects and measures relative percentages and absolute counts of human T cells (CD3+), helper/inducer (CD3+CD4+) and suppressor/cytotoxic (CD3+CD8+) T cell subsets.

Context of a physiological or pathological state

Frequencies of lymphocyte populations measured by the product can be affected by various pathological conditions and evaluation of their percentages and counts can be used in the assessment of:

- human immunodeficiency virus (HIV) infection progression ^(1, 4, 6, 8)
- hereditary immunodeficiencies ^(2, 3, 4, 10, 11, 12, 14)
- autoimmune diseases ⁽⁵⁾

Type of assay

Not automated

Quantitative

Type of specimen required

Human anticoagulated peripheral whole blood specimen

Testing population

Not intended for a specific population.

2. Intended user

The product is intended for professional laboratory use only.

Requirements on qualification

Intended user shall have a state-of-the-art expertise in flow cytometry analysis of human cells, standard laboratory techniques, including pipetting skills, safe and proper handling of specimens derived from the human body.

3. Test principle

The test principle is based on the detection of monoclonal antibody binding to a specific molecule (antigen) expressed by certain human blood cells. Monoclonal antibodies used in the test are labeled with different fluorochromes which are excited by a laser beam from a flow cytometer during acquisition of an antibody-stained blood specimen. Subsequent fluorescence (light emission) from each fluorochrome present on an acquired blood cell is collected and analyzed by the instrument. Fluorescence intensity is directly proportional to the antigen

expression density in a cell allowing for separation of different cell subsets.

4. Reagent(s) provided

Contents

The product KOMBITEST T Cell 4-color is sufficient for 50 tests and is provided with the following reagent:

1 vial (1 ml) containing a premixed combination of fluorochrome-labeled monoclonal antibodies CD3 FITC / CD45 PerCP / CD4 APC / CD8 PE, diluted at optimum concentrations in a stabilizing phosphate buffered saline (PBS) solution containing 15mM sodium azide.

Composition

Table 1 Description of active components

Antigen	Fluorochrome	Clone	Isotype	Concentration (µg/ml)
CD3	FITC	TB3	IgG2b	2
CD4	APC	MEM-241	IgG1	1.5
CD8	PE	LT8	IgG1	0.6
CD45	PerCP	MEM-28	IgG1	5

5. Materials required but not provided

12 x 75 mm round bottom test tubes

Erythrocyte lysing solution (EXCELLYSE Easy, EXBIO Praha, a.s.)

Deionized water (Reagent-grade)

Process control cells (Streck CD-Chex Plus®, Cat. No. 213323 or equivalent lysable cell control)

6. Equipment required

Automatic pipette with disposable tips (20 - 100 µl) for pipetting specimen and reagents

Liquid dispenser or pipette with disposable tips (0.5 - 2 ml) for dispensing erythrocyte lysing solution

Vortex mixer

Hematology analyzer (for absolute cell counts) capable of white blood cell (WBC) and lymphocyte count per µl of specimen

Flow cytometer with two laser excitation sources (488 nm and ~635 nm), detectors for scattered light, optical filters and emission detectors appropriate to collect

signals from fluorochromes provided in Table 2.

Table 2 Spectral characteristic of fluorochromes used in the product

Fluochrome	Excitation [nm]	Emission [nm]
FITC	488	525
PE	488	576
PerCP	488	677
APC	630 – 640	660

NOTICE: The product was tested on flow cytometers BD FACSCanto™ II (BD Biosciences), BD FACSLyric™ (BD Biosciences), Navios EX (Beckman Coulter), DxFLEX (Beckman Coulter) and Sysmex™ XF-1600 (Sysmex Corporation).

7. Storage and handling

Store at 2-8 °C.

Avoid prolonged exposure to light.

Do not freeze.

See Section 10 Procedure (Reagent Preparation) for information about In-Use stability and shelf-life following the first opening, together with the storage conditions and stability of working solutions (where applicable).

8. Warnings, precautions and limitations of use

GHS Hazard Classification

Consult Safety Data Sheet (SDS) available on the product page at www.exbio.cz for the full information on the risks posed by chemical substances and mixtures contained in the Product and how they should be handled and disposed.

Biological Hazard

Human biological samples and blood specimens and any materials coming into contact with them are always considered as infectious materials.

Use personal protective and safety equipment to avoid contact with skin, eyes and mucous membranes.

Follow all applicable laws, regulations and procedures for handling and disposing of infectious materials.

Evidence of deterioration

Normal appearance of the reagent provided is a clear liquid. Do not use the reagent if you observe any change in appearance, for example turbidity or signs of precipitation.

Limitation of use

Do not use after the expiry date stated on the product labels.

9. Specimen

Use venous peripheral blood collected into specimen receptacle classified as a medical device, with the anticoagulant EDTA.

NOTICE: Determine WBC absolute cell count and lymphocyte count in the collected blood specimen by a hematology analyzer. The product KOMBITEST T cell 4-color alone does not provide enumeration of absolute cell counts.

Blood specimen with WBC count exceeding 40×10^3 cells/ μ l will require dilution with PBS before sample processing.

Process the blood specimen no later than 24 hours after collection.

10. Procedure

Preparation of reagent(s) provided

No reagent preparation is necessary.

Bring the reagent to the room temperature prior to use. Keep the product primary container dry.

Use the reagent directly from its original primary container. Time, for which the reagent is in use (exposed to light and elevated temperature), shall not exceed 4 hours per day.

Following the first opening, the reagent retains its performance characteristics until the expiry date when stored under the stated conditions in its original primary container.

CAUTION: Do not dilute the reagent.

Preparation of materials required but not provided

Dilute concentrated erythrocyte lysing solution with deionized water according to the manufacturer's instructions. Diluted (1X) erythrocyte lysing solution is stable for 1 month when stored in a liquid dispenser or closed container at room temperature.

Quality control

Use Streck CD-Chex Plus® or equivalent control cells as positive procedural control to ensure proper performance of the product as intended. Streck CD-Chex Plus® provides established values for percent positive and absolute counts of T cells, B cells, granulocytes, monocytes and NK cells, including two clinically relevant levels of CD4+ cells.

Stain the control blood using KOMBITEST T Cell 4-color reagent according to

sample processing as specified in the TDS. Verify that the obtained results (% Positive Cells) are within the Expected range reported for the used lot of control cells.

Specimen staining

1. For each specimen, label a 12 × 75 mm round bottom test tube with the appropriate sample identification.
2. Pipette 20 µl of KOMBITEST T Cell 4-color reagent into the bottom of the 12 x 75 mm test tube.
3. Pipette 50 µl of well-mixed blood specimen to the bottom of the test tube.

CAUTION: Avoid pipetting blood on the side of the test tube. If blood smear or droplet remains on the side of the tube, it may not be stained with the reagent or erythrocytes may not be lysed and the test result may not be valid.

4. Vortex and incubate the test tube for 20 minutes at room temperature in the dark.
5. Add 500 µl of diluted (1X) lysing solution to the test tube.
6. Vortex and incubate the test tube for 10 minutes at room temperature in the dark.

Acquire the stained sample immediately on the flow cytometer. If the stained sample will not be acquired immediately, store at 2-8 °C in the dark and analyze within 24 hours.

CAUTION: Vortex the stained sample immediately before acquisition on the flow cytometer to avoid aggregates.

Flow cytometry analysis

The flow cytometer selected for use with the product KOMBITEST T Cell 4-color shall be calibrated on a routine basis using fluorescent microbeads to ensure stable sensitivity of detectors according to the cytometer manufacturers instructions.

If not maintained properly the flow cytometer may produce false results.

Refer to the manufacturer's cytometer specifications for lasers and fluorescence detectors according to the excitation and emission characteristics of the fluorochromes in Section 6 Equipment required.

Set voltages on the fluorescence detectors of interest prior to stained specimen analysis. Voltage on a PMT detector should be set high enough, so that minimum of negatively stained events interfere with 0th channel on the fluorescence axis. Also, PMT detector voltage should not exceed values at which positive events are pressed to the right axis.

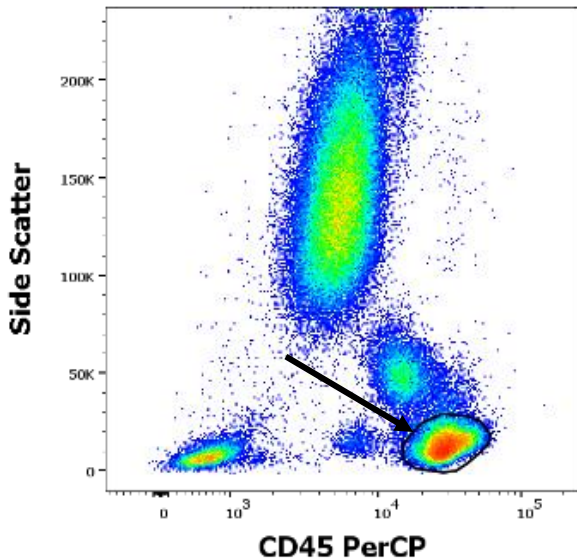
Compensate fluorescence signals between detectors prior to or after data acquisition. Data may be incorrectly interpreted if fluorescence signals are compensated improperly or if gates are positioned inaccurately.

For measured data analysis, it is possible to use cytometer software developed by the manufacturer, or software dedicated for offline cytometry data analysis (for example FlowJo™, VenturiOne®, Infinicyt™).

Data analysis of the KOMBITEST T Cell 4-color stained specimen

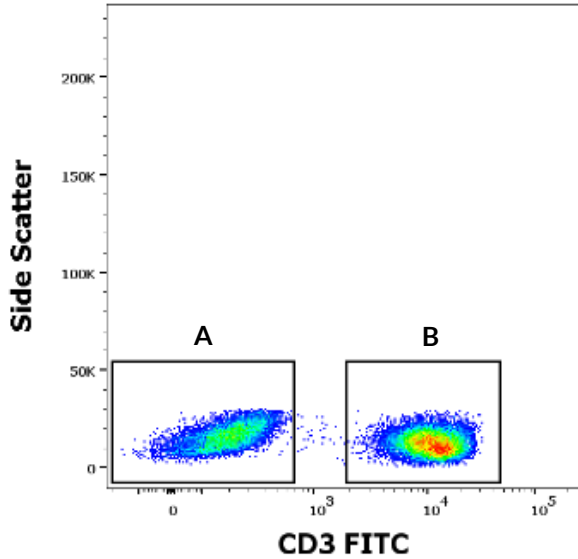
Visualize compensated data in a side-scatter (SSC) versus CD45 PerCP plot. Set the gate for CD45+ lymphocyte population as shown in Figure 1.

Figure 1 Delineation of CD45+ lymphocyte population



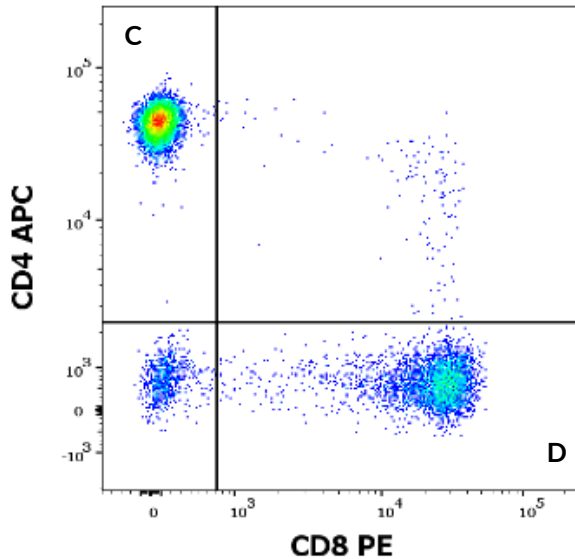
Plot the gated CD45+ lymphocytes in a side-scatter (SSC) versus CD3 FITC plot as shown in Figure 2. Separate CD3+ and CD3- lymphocytes using appropriate gates. Calculate the percentage of T cells (CD3+; region B on the Figure 2) from all lymphocytes.

Figure 2 Separation of CD3+ and CD3- lymphocytes



Plot the gated T cells (CD3+; region B on the Figure 2) as CD4 APC versus CD8 PE as shown in Figure 3. Set appropriate gates and calculate the percentage of helper/inducer T cells (CD4+CD8-; region C on the Figure 3) and suppressor/cytotoxic T cells (CD4-CD8+; region D on the Figure 3) from all lymphocytes.

Figure 3 CD3+ lymphocytes in a dot-plot CD4 APC vs. CD8 PE



Calculation and interpretation of analytical results

To have absolute counts, use the absolute lymphocyte count as determined by a hematology analyzer. Refer to hematology analyzer manufacturer's instructions. Use the equations below for absolute count enumeration of required lymphocyte subset.

$$A \times \frac{B (\%)}{100 (\%)} = \text{Absolute count of required lymphocyte subset}$$

A = absolute lymphocyte count (data from hematology analyzer; cells / μ l)

B = relative percentages of required lymphocyte subset from all lymphocytes
(data from flow cytometer; %)

11. Analytical performance

NOTICE: All analytical performance data were measured using erythrocyte lysing solution EXCELLYSE Easy (EXBIO Praha, a.s.).

Specificity

The antibody TB3 recognizes human CD3 antigen of the TCR/CD3 complex. Specificity of the antibody has been confirmed by HCDM Council (HLDA X and HLDA XI workshop).

The antibody MEM-241 recognizes human CD4 antigen (T cell surface glycoprotein CD4). Specificity of the antibody has been confirmed by HCDM Council (HLDA VIII workshop).

The antibody LT8 recognizes human CD8 antigen (disulfide-linked dimer expressed as two CD8 alpha chain homodimers or CD8 alpha/beta chain heterodimers). Specificity of the antibody has been confirmed by HLDA workshops (HLDA V workshop⁽¹³⁾ and HLDA VII workshop⁽⁷⁾).

The antibody MEM-28 recognizes all leukocyte isoforms of human CD45 (Protein tyrosine phosphatase receptor type C). Specificity of the antibody has been confirmed by HLDA workshop (HLDA III workshop⁽⁹⁾).

Accuracy

Accuracy of the method was determined as a comparison of the product KOMBITEST T Cell 4-color with similar products available on the market or with other well-documented methods by parallel staining of 44 healthy donors and 104 patients suspected of having immune system pathological condition. Linear regression analysis parameters are provided in Table 3 and 4.

Table 3 Linear regression analysis for lymphocyte subsets in healthy donors (comparison of the product KOMBITEST T Cell 4-color with product BD Multitest™ CD3/CD8/CD45/CD4 (Cat. No. 342417))

Lymphocyte Subset	Unit	n	Slope	Intercept	R ²	Range
CD3+	%	44	1.00	-0.005	0.97	49.80 - 84.67
	cells/μl	44	0.99	9.320	0.99	620 - 2187
CD3+CD8+	%	44	1.02	0.004	0.98	10.37 - 45.57
	cells/μl	44	1.01	-3.216	1.00	151 - 1048
CD3+CD4+	%	44	1.04	-0.018	0.97	26.43 - 60.30
	cells/μl	44	0.99	-1.259	0.98	337 - 1633

n = number of blood samples

Table 4 Linear regression analysis for lymphocyte subsets in patients suspected of having immune system pathological conditions (comparison of the product KOMBITEST T Cell 4-color with AQUIOS CL Flow Cytometry System - Beckman Coulter, Inc. and accredited clinical laboratory in-house method – a cocktail of single color conjugated antibodies from different manufacturers and analysis on the BD FACSCanto™ II)

Lymphocyte Subset	Unit	n	Slope	Intercept	R ²	Range
CD3+	%	104	1.040	-2.593	0.98	23.0 - 93.5
	cells/μl	104	1.040	-0.067	0.96	362 - 5161
CD3+CD8+	%	104	1.045	-1.355	0.99	9.0 - 80.7
	cells/μl	104	1.094	-0.067	0.95	152 - 3732
CD3+CD4+	%	104	0.985	0.029	0.99	1.4 - 67.0
	cells/μl	104	0.980	-0.004	0.99	8 - 2818

Linearity

The linearity of the method was verified on 10 serial dilutions of a leukocyte-enriched blood sample (buffy coat). Cell samples were stained with KOMBITEST T Cell 4-color in hexaplicates. Samples were analyzed using BD FACSCanto™ II flow cytometer and Beckman Coulter DxFLEx flow cytometer. Measured data for the indicated lymphocyte subsets were observed to be linear across the lymphocyte range 40 -10546 cells/μl using BD FACSCanto™ II and 15 - 10519 cells/μl using Beckman Coulter DxFLEx. Cell subsets were in the ranges found in Tables 5 and 6.

Table 5 Linear ranges of lymphocyte subsets analysed by BD FACSCanto™ II

BD FACSCanto™ II	
Lymphocyte Subset	Range (cells/μl)
CD3+	31 - 7302
CD3+CD8+	9 - 2182
CD3+CD4+	17 - 4080

Table 6 Linear ranges of lymphocyte subsets analysed by Beckman Coulter DxFLEx

Beckman Coulter DxFLEx	
Lymphocyte Subset	Range (cells/μl)
CD3+	10 - 7268
CD3+CD8+	3 - 2297
CD3+CD4+	6 - 3940

Repeatability

The repeatability of the assay was measured on ten blood samples in hexaplicates. Samples were analyzed using BD FACSCanto™ II flow cytometer and Beckman Coulter DxFLEX flow cytometer. Coefficients of variation (CV) are provided in the tables below (Table 7 and 8).

Table 7 Repeatability of the product on BD FACSCanto™ II

BD FACSCanto™ II					
Lymphocyte Subset	Unit	n	Average	SD	%CV
CD3+	%	10	69.27	0.34	0.51
	cells/μl	10	1408	7.30	0.51
CD3+CD8+	%	10	22.40	0.23	1.16
	cells/μl	10	449	4.70	1.16
CD3+CD4+	%	10	42.21	0.28	0.68
	cells/μl	10	864	6.04	0.68

Table 8 Repeatability of the product on Beckman Coulter DxFLEX

Beckman Coulter DxFLEX					
Lymphocyte Subset	Unit	n	Average	SD	%CV
CD3+	%	10	68.26	0.43	0.67
	cells/μl	10	1389	10.12	0.67
CD3+CD8+	%	10	22.61	0.23	1.15
	cells/μl	10	454	4.62	1.15
CD3+CD4+	%	10	41.04	0.45	1.09
	cells/μl	10	842	10.09	1.09

Reproducibility

The reproducibility of the assay was measured on 2 stabilized blood samples (CD-Chex Plus® and CD-Chex Plus® CD4 Low) under the same conditions for 15 days using 3 lots of the product (5 days each). Samples were analyzed using BD FACSCanto™ II flow cytometer and Beckman Coulter DxFLEX flow cytometer. Coefficients of variation (CV) are given in the tables below (Table 9 and 10).

Table 9 Reproducibility of the product on BD FACSCanto™ II

Lymphocyte Subset	Material	Unit	Average	SD	%CV
CD3+	CD-Chex Plus®	%	76.60	0.35	0.45
		cells/μl	1888	8.55	0.45
	CD-Chex Plus® CD4 Low	%	60.07	0.40	0.67
		cells/μl	872	5.82	0.67
CD3+CD8+	CD-Chex Plus®	%	23.68	0.24	1.03
		cells/μl	584	5.99	1.03
	CD-Chex Plus® CD4 Low	%	42.19	0.28	0.67
		cells/μl	612	4.09	0.67
CD3+CD4+	CD-Chex Plus®	%	48.99	0.37	0.75
		cells/μl	1209	9.05	0.75
	CD-Chex Plus® CD4 Low	%	12.77	0.26	2.03
		cells/μl	185	3.76	2.03

Table 10 Reproducibility of the product on Beckman Coulter DxFLEX

Lymphocyte Subset	Material	Unit	Average	SD	%CV
CD3+	CD-Chex Plus®	%	76.67	0.44	0.58
		cells/μl	1891	10.9	0.58
	CD-Chex Plus® CD4 Low	%	60.36	0.39	0.64
		cells/μl	876	5.63	0.64
CD3+CD8+	CD-Chex Plus®	%	23.79	0.32	1.34
		cells/μl	567	7.85	1.34
	CD-Chex Plus® CD4 Low	%	42.91	0.36	0.84
		cells/μl	623	5.21	0.84
CD3+CD4+	CD-Chex Plus®	%	48.70	0.40	0.83
		cells/μl	1201	9.95	0.83
	CD-Chex Plus® CD4 Low	%	12.59	0.21	1.65
		cells/μl	183	3.02	1.65

12. Expected values

Reference Interval

Reference intervals for the product KOMBITEST T Cell 4-color were determined in a cohort of subjects using erythrocyte lysing solution EXCELLYSE Easy (EXBIO Praha, a.s.) and the BD FACSLyric™ flow cytometer. Subjects were healthy normal adults (blood donors).

Table 11 Representative reference intervals for the KOMBITEST T Cell 4-color

LymphocyteSubset	Unit	n	Mean	95% Range
CD3+	%	44	70.08	52.47 - 87.69
	cells/ μ l	44	1366	616 - 2117
CD3+CD8+	%	44	23.34	7.38 - 39.30
	cells/ μ l	44	464	18 - 910
CD3+CD4+	%	44	42.57	23.55 - 61.58
	cells/ μ l	44	820	333 - 1306

CAUTION: Indicated values using the product are intended to be representative only. Each laboratory must establish its own reference intervals from the local population of normal donors.

13. Interfering substances and limitations

The product KOMBITEST T Cell 4-color has not been validated for use in specimens collected with heparin or acid citrate dextrose (ACD) anticoagulants in determining relative and absolute counts.

The product KOMBITEST T Cell 4-color is not intended for screening and/or phenotyping of leukemia and lymphoma samples.

Absolute counts are not comparable between laboratories using different equipment from various manufacturers.

14. References

- 1) Bensussan. A et al. Significant enlargement of a specific subset of CD3+CD8+ peripheral blood leukocytes mediating cytotoxic T-lymphocyte activity during human immunodeficiency virus infection. Proc Natl Acad Sci U S A. 1993 15;90(20):9427-30. doi: 10.1073/pnas.90.20.9427.
- 2) Boldt. A et al. Eight-color immunophenotyping of T-, B-, and NK-cell subpopulations for characterization of chronic immunodeficiencies. Cytometry B Clin Cytom 2014 May;86(3):191-206. doi:10.1002/cyto.b.21162.
- 3) de Saint Basile. G et al. Severe combined immunodeficiency caused by deficiency in either the delta or the epsilon subunit of CD3. J Clin Invest. 2004 Nov;114(10):1512-7. doi: 10.1172/JCI22588.

- 4) Giorgi. J V. Characterization of T lymphocyte subset alterations by flow cytometry in HIV disease. *Ann N Y Acad Sci.* 1993 Mar 20;677:417-9. doi: 10.1111/j.1749-6632.1993.tb38803.x.
- 5) Iwatani. Y et al. Decreases in alpha beta T cell receptor negative T cells and CD8 cells. and an increase in CD4+ CD8+ cells in active Hashimoto's disease and subacute thyroiditis. *Clin Exp Immunol.* 1992 Mar;87(3):444-9. doi: 10.1111/j.1365-2249.1992.tb03017.x.
- 6) Li. Y et al. AIDS prevention and control in the Yunnan region by T cell subset assessment. *PLoS One.* 2019 Apr 18;14(4):e0214800. doi: 10.1371/journal.pone.0214800
- 7) Mason. D et al. eds.: *Leucocyte Typing VII: White Cell Differentiation Antigens: Proceedings of the Seventh International Workshop and Conference Held in Harrogate.* United Kindom: Oxford University Press; 2002.
- 8) McCarty. B et al. Low Peripheral T Follicular Helper Cells in Perinatally HIV-Infected Children Correlate With Advancing HIV Disease. *Front Immunol.* 2018 Aug 24;9:1901. doi: 10.3389/fimmu.2018.01901.
- 9) McMichael AJ. ed. *Leucocyte Typing III: 54 White Cell Differentiation Antigens.* New York. NY: Oxford University Press; 1987.
- 10) Monafo. W J et al. A hereditary immunodeficiency characterized by CD8+ T lymphocyte deficiency and impaired lymphocyte activation. *Clin Exp Immunol.* 1992 Dec;90(3):390-3. doi: 10.1111/j.1365-2249.1992.tb05856.x.
- 11) North. M E et al. Primary defect in CD8+ lymphocytes in the antibody deficiency disease (common variable immunodeficiency): abnormalities in intracellular production of interferon-gamma (IFN-gamma) in CD28+ ('cytotoxic') and CD28- ('suppressor') CD8+ subsets. *Clin Exp Immunol.* 1998 Jan;111(1):70-5. doi: 10.1046/j.1365-2249.1998.00479.x.
- 12) Picat. M Q et al. T-cell activation discriminates subclasses of symptomatic primary humoral immunodeficiency diseases in adults. *BMC Immunol.* 2014 Mar 12;15:13. doi: 10.1186/1471-2172-15-13.
- 13) Schlossman SF. Boumsell L. Gilks W. et al. eds.: *Leucocyte Typing V: White Cell Differentiation Antigens.* New York. NY: Oxford University Press; 1995.
- 14) van Dongen. J J M et al. EuroFlow-Based Flowcytometric Diagnostic Screening and Classification of Primary Immunodeficiencies of the Lymphoid System. *Front Immunol.* 2019 Jun 13;10:1271. doi: 10.3389/fimmu.2019.01271.

15. Trademarks

BD FACSCanto™ II, BD FACSLyric™, BD Multitest™ and FlowJo™ are registered trademarks of Becton, Dickinson and Company, CD-Chex Plus® is a registered

trademark of Streck, Sysmex™ is registered trademark of Sysmex Corporation, VenturiOne® is registered trademark of Applied Cytometry, Infinicyt™ is registered trademark of Cytognos S.L..

16. Revision History

Version 1, ED7781_TDS_v1

Initial release

17. Manufacturer

EXBIO Praha. a.s.

Nad Safinou II 341

25250 Vestec

Czech Republic

Contact Information

info@exbio.cz

technical@exbio.cz

orders@exbio.cz

www.exbio.cz

NOTICE: Any serious incident that has occurred in relation to the product shall be reported to the manufacturer and the local competent authority.