

# Pokeweed mitogen (PWM)

Cat.No. ED7635

## Description

Single-use flow cytometry tube for *in vitro* stimulation of human whole blood

## Specification

Active ingredient *Phytolacca americana lectin*  
Content 0.010 mg

## Reagent provided

Single-use tube with dual position cap containing a mixture of vacuum dried *Phytolacca americana lectin* with protective excipients. The mixture was sterilized by filtration prior to vacuum drying.

## Storage and handling

Store at room temperature (20 - 30 °C).

The product is shipped within a protective foil bag. Each bag contains 5 tubes. Do not open the bag until the immediate use. Reseal the bag with remaining tubes after removing a tube. Use the tubes within a month after the first opening of the foil bag.

Uncap tubes aseptically in a tissue culture hood.

Shelf-life printed on product labels represents the shelf-life of the unopened product.

## Warnings and precautions

The product is intended for a single use only. Dispose the tubes after use as a potentially infectious material.

Wear gloves and protective clothing.

The tubes are closed with dual position caps. Use the ventilation position during cell culture to allow CO<sub>2</sub> exchange between the atmosphere and the culture medium.

## Application

### Blast transformation of human lymphocytes

Open the bag and remove the necessary number of tubes.

Bring the tubes to the cell culture hood and place them in a suitable rack. Carefully remove caps.

Add 0.5 ml of cell culture medium (e.g. X-VIVO 10 with Gentamycin and Phenol Red, Lonza Cat. No. 04-380Q).

Add 50 µl of specimen (human blood anticoagulated with heparin) and vortex to mix.

Cover the tubes with caps (ventilation position).

Incubate for 3 days at 37 °C in atmosphere with 5 % CO<sub>2</sub>.

Analyze lymphocyte proliferation (e.g. T-cell BlastFlowEx Kit, EXBIO Cat. No. ED7642).

Figure 1. Dual position cap

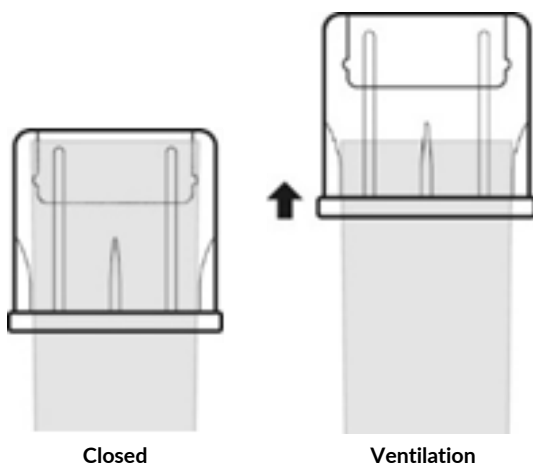


Figure 2. Ki-67 expression in CD3<sup>+</sup> lymphocytes after 3 days of stimulation with Pokeweed mitogen (PWM)

Whole blood was stimulated for 3 days at 37 °C and the response was analyzed with T-cell BlastFlowEx Kit (EXBIO Cat. No. ED7642). The graph shows distribution of fluorescence in PE detector, the fluorescence intensity corresponds to Ki-67 expression in CD3<sup>+</sup> lymphocytes (two peaks in PWM stimulated sample - red, single negative peak in negative control - black dashed line).

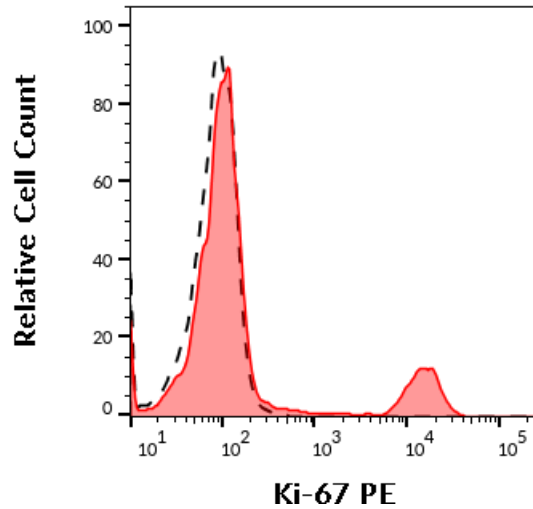
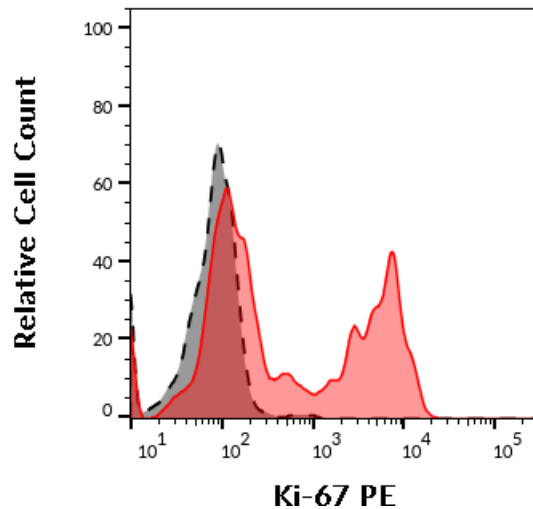


Figure 3. Ki-67 expression in CD20<sup>+</sup> lymphocytes after 5 days of stimulation with Pokeweed mitogen (PWM)

Whole blood was stimulated for 5 days at 37 °C and the response was analyzed with T-cell BlastFlowEx Kit (EXBIO Cat. No. ED7642). The graph shows distribution of fluorescence in PE detector, the fluorescence intensity corresponds to Ki-67 expression in CD20<sup>+</sup> lymphocytes (two peaks in PWM stimulated sample - red, single negative peak in negative control - black dashed line).



## References

Unpublished

## Manufacturer

EXBIO Praha, a.s.  
Nad Safinou II 341  
25250 Vestec  
Czech Republic

info@exbio.cz  
technical@exbio.cz  
orders@exbio.cz

www.exbio.cz

## Revision History

- Version 1, ED7635\_TDS\_v1  
Initial Release
- Version 2, ED7635\_TDS\_v2  
Product description change from "lyophilized" to "dried" stimulation reagent. Stimulation procedure change, the first step to spin down the

material to the bottom of the tube omitted, it was no longer necessary.

- Version 3, ED7635\_TDS\_v3

Product description change, the adjective “dried” omitted from the description.

- Version 4, ED7635\_TDS\_v4

Company logo design change, TDS layout change.

- Version 5, ED7635\_TDS\_v5

Figures size change. Figure 2 change, negative control line added. New figure added (Figure 3) with B-lymphocyte response.

## Symbols



Catalog number



Batch code



Use-by date



Temperature limits



Consult instructions for use



Manufacturer



For Research use only.

Not for use in diagnostic or therapeutic procedures.

# exbio

## Pokeweed mitogen (PWM)

1 test | Cat.No. ED7635

**For Research use only.**

**Not for use in diagnostic or therapeutic procedures.**

### Technical Data Sheet

Version ED7635\_TDS\_v5\_EN

Date of Issue: 10-04-2019

EN

Unless indicated otherwise, all products are For Research Use Only and not for diagnostic use. In vivo diagnostic or therapeutic applications are strictly forbidden. Products shall not be used for resale or transfer to third parties either as a stand-alone product or as a manufacture component of another product without written consent of EXBIO Praha, a.s.

EXBIO Praha, a.s. will not be held responsible for patent infringement or any other violations of intellectual property rights that may occur with the use of the products. Orders for all products are accepted subject to the Terms and Conditions available at [www.exbio.cz](http://www.exbio.cz).

EXBIO, EXBIO Logo, and all other trademarks are property of EXBIO Praha, a.s.

© 2019 EXBIO. All rights reserved.