

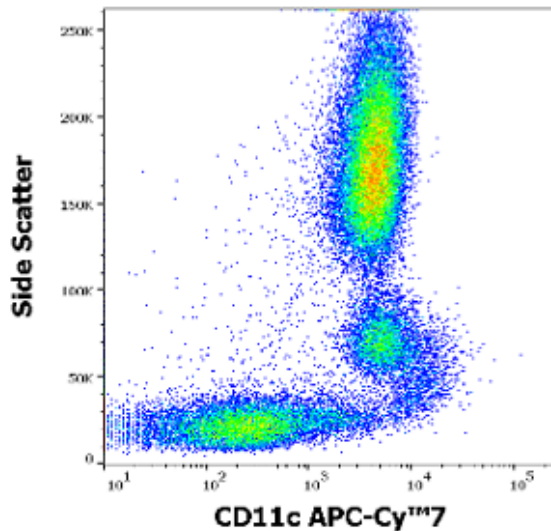
SingleFlowEx CD11c APC-Cy™7

ED7501

1 ml

For Research Use Only. Not for use in diagnostic or therapeutic procedures. Product is manufactured in accordance with current Good Manufacturing Practices (GMP).

Description	SingleFlowEx is fluorochrome-labeled monoclonal antibody single reagent for use in laboratory-developed multicolor flow cytometry tests in order to examine human clinical samples. SingleFlowEx can be used in various multicolor combinations. Laboratory shall establish the SingleFlowEx performance characteristics in conjunction with other reagents in normal and pathological samples.
Clone	BU15
Antigen	CD11c
Isotype	Mouse IgG1
Format	APC-Cy™7
Excitation laser	red (633 nm)
Concentration	0.020 mg/ml
Contents	1 vial of monoclonal antibody reagent. The content (1 ml) is sufficient for min. 100 tests.
Formulation	Stabilizing phosphate buffered saline (PBS) solution containing 15 mM sodium azide
Application	FC
Product data	



Example of surface staining pattern using SingleFlowEx CD11c APC-Cy™7
Clone: BU15
Sample: EDTA-anticoagulated human peripheral blood, healthy donor
Staining protocol: 10 µl reagent / 100 µl blood sample; Lyse and Wash
Erythrocyte lysis: EXCELLYSE Easy (ED7066)

References

Storage and handling

The product is shipped with ice packs. Transport conditions, including short-term elevated temperature, do not impair product performance characteristics or do not affect stated product expiry date. Upon receipt, store and handle as directed.
Store at 2-8°C.
Keep away from sunlight.
Do not freeze.
Do not use after the expiry date stated on the product labels.
No reconstitution is necessary. Use the product directly from its original product container.
The product retains its performance characteristics until the expiry date when stored under stated conditions in its original product container.

Warnings and precautions

GHS Hazard Classification
Product contains chemical substances and mixtures in concentrations not classified as hazardous. Consult product Safety Data Sheet (SDS) available at www.exbio.cz for the full information on the risks posed by chemical substances and mixtures and how they should be handled and disposed.

Biological Hazard
Human biological samples and blood specimens and any materials coming into contact with them are always considered as infectious materials.
Use personal protective and safety equipment to avoid contact with skin, eyes and mucous membranes.
Follow applicable laws, regulations and procedures for handling and disposing of infectious materials.

Symbols

Glossary of symbols used on product packaging and labelling is available at www.exbio.cz

The product is intended For Research Use Only. Diagnostic or therapeutic applications are strictly forbidden. Products shall not be used for resale or transfer to third parties either as a stand-alone product or as a manufacture component of another product without written consent of EXBIO Praha, a.s.
EXBIO Praha, a.s. will not be held responsible for patent infringement or any other violations of intellectual property rights that may occur with the use of the products. Orders for all products are accepted subject to the Term and Conditions available at www.exbio.cz.
EXBIO, EXBIO Logo, and all other trademarks are property of EXBIO Praha, a.s.

Cy™ and CyDye™ are registered trademarks of GE Healthcare.



EXBIO Praha, a.s. • Nad Safinou II 341 • 252 50 Vestec • Czech Republic
info@exbio.cz • technical@exbio.cz • orders@exbio.cz • www.exbio.cz