

EXCELLYSE XPerm

Cat.No. ED7397

Description

EXCELLYSE XPerm is a set of two solutions intended for red blood cell lysis together with permeabilization of cytoplasmic membranes of leukocytes in the preparation of biological samples from human peripheral blood prior to the flow cytometry analysis.

Specification

XPerm Solution A is formulated to fix a sample of whole blood.

XPerm Solution B is formulated to permeabilize cytoplasmic membranes of leukocytes and to block non-specific interactions during intracellular staining of whole blood samples that were previously fixed with XPerm Solution A and lysed with deionized water.

Reagent provided

XPerm Solution A, 1 x 25 ml

XPerm Solution B, 1 x 25 ml

Storage and handling

Store at 2-25 °C. Do not freeze the reagent. Avoid prolonged exposure to light.

The shelf life after the first opening is the same as the shelf life for the unopened product if stored at the stated storage conditions.

Warnings and precautions

The product is intended for users experienced in the method of flow cytometry in laboratory environment.

XPerm solution A contains formaldehyde and methanol. Do not dispose of the product together with municipal waste. Dispose the unused XPerm solution A as a hazardous solution in accordance with laws and local regulations.

XPerm solution B contains sodium azide as a preservative.

All supernatants from blood centrifugations are considered as biohazardous waste and must be disposed in accordance with laws and local regulations.

Application

Staining intracellular antigens for flow cytometry

Use **100 µl of anticoagulated human blood** to stain the surface markers with appropriate antibody reagents.

Add **250 µl of XPerm Solution A**.

Mix and incubate for 10 minutes at room temperature (20 -30 °C).

Add **3 ml of denionized water**.

Mix and incubate for 10 minutes at room temperature.

Centrifuge the cells at 300 x g for 5 minutes, decant the supernatant.

Add **250 µl of XPerm Solution B**.

Add appropriate volume of intracellular antibody reagents.

Mix and incubate for 15 - 30 minutes at room temperature in the dark.

Wash by adding **2 ml of PBS**, centrifuge the cells at 300 x g for 5 minutes, decant supernatant.

Resuspend cells in **0.2 - 0.3 ml of PBS with 1% formaldehyde**.

Store in the dark at 2 - 8 °C until analysis.

Figure 1. Light scatter properties of human peripheral blood processed with EXCELLYSE XPerm

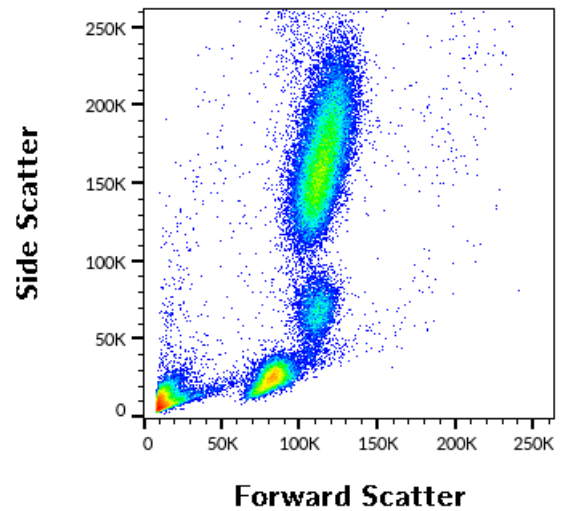


Figure 2. Myeloperoxidase staining of human peripheral blood processed with EXCELLYSE XPerm

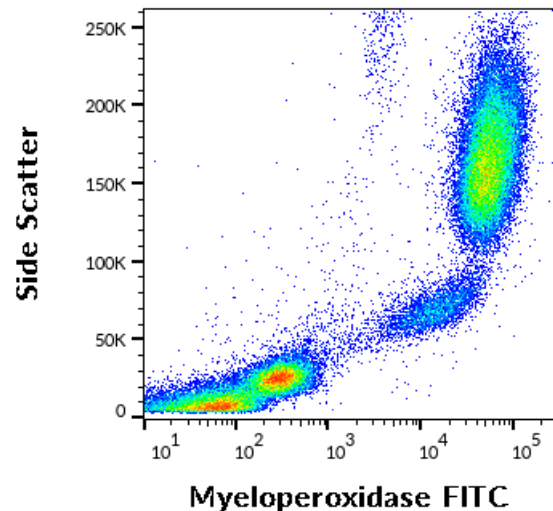
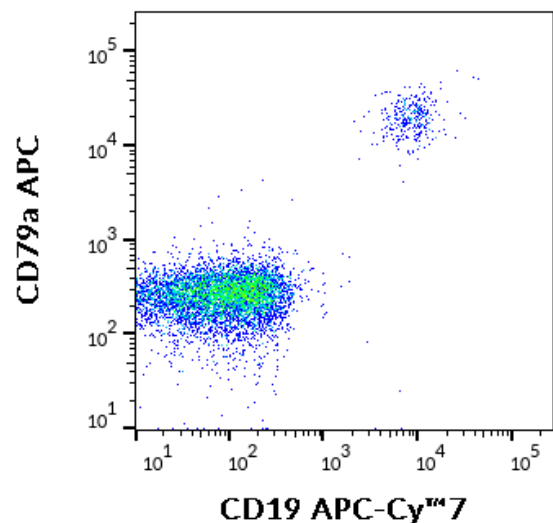


Figure 3. CD79a vs CD19 staining of human peripheral blood processed with EXCELLYSE XPerm (graph shows the subpopulation of lymphocytes only)



References

Unpublished

Manufacturer








EXBIO Praha, a.s.
Nad Safinou II 341
25250 Vestec
Czech Republic

info@exbio.cz
technical@exbio.cz
orders@exbio.cz
www.exbio.cz

Revision History

- Version 1, ED7397_TDS_v1
Initial Release
- Version 2, ED7397_TDS_v2
TDS layout change, several sections were renamed or omitted. The section "Intended purpose" was renamed to "Description". The sections: "Test principle", "Materials required but not provided", "Equipment required", "Specimen", "Analytical performance", "Clinical performance" were omitted from TDS. Additional figures with flow cytometry data were added (Myeloperoxidase and CD79a/CD19).
- Version 3, ED7397_TDS_v3
Typing error correction at the title page: "1 test" to "100 tests".

Symbols

	Catalog number
	Batch code
	Use-by date
	Temperature limits
	Consult instructions for use
	Manufacturer
	For Research use only. Not for use in diagnostic or therapeutic procedures.

exbio

EXCELLYSE XPerm

100 tests | Cat.No. **ED7397**

For Research use only.

Not for use in diagnostic or therapeutic procedures.

Technical Data Sheet

Version ED7397_TDS_v3_EN
Date of Issue: 19-06-2019

EN

Cy™ and CyDye™ are registered trademarks of GE Healthcare.

Unless indicated otherwise, all products are For Research Use Only and not for diagnostic use. In vivo diagnostic or therapeutic applications are strictly forbidden. Products shall not be used for resale or transfer to third parties either as a stand-alone product or as a manufacture component of another product without written consent of EXBIO Praha, a.s.

EXBIO Praha, a.s. will not be held responsible for patent infringement or any other violations of intellectual property rights that may occur with the use of the products. Orders for all products are accepted subject to the Terms and Conditions available at www.exbio.cz.

EXBIO, EXBIO Logo, and all other trademarks are property of EXBIO Praha, a.s.

© 2019 EXBIO. All rights reserved.