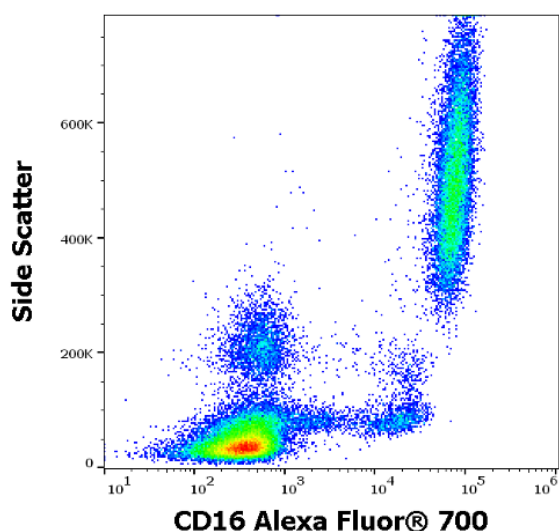


SingleFlowEx CD16 Alexa Fluor® 700

ED7649

1 ml

Description	SingleFlowEx is fluorochrome-labeled monoclonal antibody single reagent for use in laboratory-developed multicolor flow cytometry tests in order to examine human clinical samples. SingleFlowEx can be used in various multicolor combinations. Laboratory shall establish the SingleFlowEx performance characteristics in conjunction with other reagents in normal and pathological samples.
Clone	3G8
Antigen	CD16
Isotype	Mouse IgG1 kappa
Format	Alexa Fluor® 700
Excitation laser	red (633 nm)
Concentration	0.150 mg/ml
Contents	1 vial of monoclonal antibody reagent. The content (1 ml) is sufficient for min. 100 tests.
Formulation	Stabilizing phosphate buffered saline (PBS), pH 7.4, 15 mM sodium azide
Application	FC (QC tested)
Product data	



Example of surface staining pattern using SingleFlowEx CD16 Alexa Fluor® 700
 Clone: 3G8
 Sample: EDTA-anticoagulated human peripheral blood, healthy donor
 Staining protocol: 10 µl reagent / 100 µl blood sample; Lyse and Wash
 Erythrocyte lysis: EXCELLYSE Easy (ED7066)

References	Reiterová M, Kohlscheen S, Maglia O, Sala S, Schumich A, Maurer-Granofszky M, Faggin G, Scarparo P, Varotto E, Šestáková Z, Švec P, Feuerstein T, Vernitsky H, Kužílková D, Hrušák O, Buldini B, Dworzak M, Brüggemann M, Gaipa G, Kalina T: Flow-cytometric MRD detection in pediatric T-ALL: a multicenter AIEOP-BFM consensus-based guided standardized approach. Clin Chem Lab Med. 2025 Mar 13;63(7):1419-1426.
------------	--

Storage and handling

Store at 2-8°C. Protect from prolonged exposure to light. Do not freeze.

Warnings and precautions

GHS Hazard Classification

Consult Safety Data Sheet (SDS) available on Product page at www.exbio.cz for the full information on the risks posed by chemical substances and mixtures contained in the Product and how they should be handled and disposed.

Biological Hazard

Human biological samples and blood specimens and any materials coming into contact with them are always considered as infectious materials.

Use personal protective and safety equipment to avoid contact with skin, eyes and mucous membranes. Follow all applicable laws, regulations and procedures for handling and disposing of infectious materials.

Limitations of Use

Do not dilute.

Use the product directly from its original product container.

Do not use after the expiry date stated on the product labels.

Symbols

Glossary of symbols used on product packaging and labelling is available at www.exbio.cz

The product is intended For Research Use Only. Diagnostic or therapeutic applications are strictly forbidden. Products shall not be used for resale or transfer to third parties either as a stand-alone product or as a manufacture component of another product without written consent of EXBIO Praha, a.s. EXBIO Praha, a.s. will not be held responsible for patent infringement or any other violations of intellectual property rights that may occur with the use of the products. Orders for all products are accepted subject to the Term and Conditions available at www.exbio.cz. EXBIO, EXBIO Logo, and all other trademarks are property of EXBIO Praha, a.s.

Alexa Fluor®, Pacific Blue™ and Pacific Orange™ are registered trademarks of Life Technologies Corporation.



EXBIO Praha, a.s. • Nad Safinou II 341 • 252 50 Vestec • Czech Republic
info@exbio.cz • technical@exbio.cz • orders@exbio.cz • www.exbio.cz